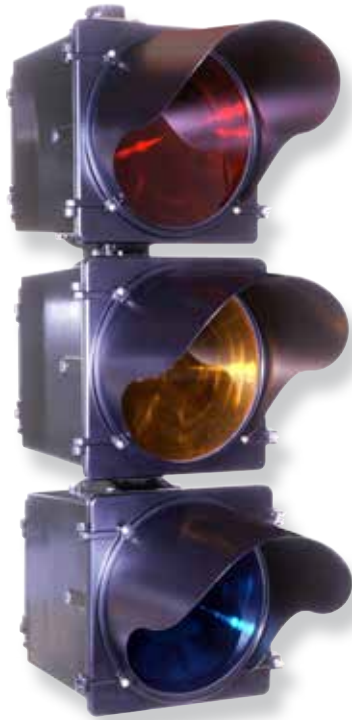


Programmable Traffic Signal



Cabinets
Controllers
Signals
Signs
Software
Specialty

Overview

McCain's Programmable Traffic Signals are rugged, high performance, directional traffic signals used to limit signal visibility to specific target areas and increase intersection safety. These 12-inch traffic signals feature a focused and directional beam for precise lane control or to avoid motorist confusion when two intersections are in close proximity. McCain, an industry leader in signal manufacturing and supply, offers an extensive range of configurations and accessories, including backplates, visors, and signal assemblies to match all your traffic signal requirements.

Benefits

- Provide superior visibility
- Help reduce accidents and improve traffic flow
- Configure to meet your needs and specifications
- Stand the test of time with weather-tight doors and corrosion-resistant aluminum fabrication
- Available with a full range of accessories including; backplates, visors, and mounting hardware

Product Description

The McCain aluminum Programmable Traffic Signals are modular in design allowing them to be assembled in a variety of configurations. Signals are compatible with 115 VAC, three-prong, incandescent bulbs, and LED assemblies.

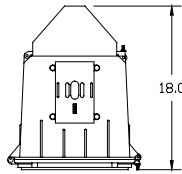
Programming is accomplished through the use of a Fresnel lens and a smaller clear lens. Masked-off portions of the smaller lens control which signal faces each lane sees during approach.

Signal sections can be tilted in two-degree increments for a maximum of ten degrees above and below the horizontal axis while still maintaining a common vertical axis.

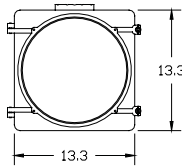
The incandescent version of the signal head has an automatic dimming circuit to adjust light output according to environment conditions.

Programmable Traffic Signal

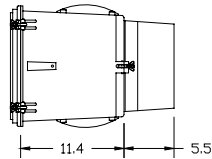
Top



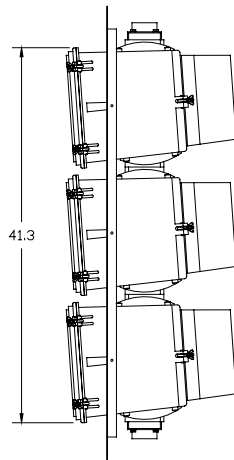
Front



Side



3-Section



Dimensions rounded to the nearest 0.1"

Vertical dimension of 3-section is approximate

3-section shown as typical configuration with backplate and 4° tilt

Standard Features

- Individual modular sections
- Reinforcing ribs on top and bottom of housings for extra rigidity
- Stainless steel door roll pins and eye bolt/wing nut assemblies
- Moisture proof and dust tight neoprene gasket fitted to the gasket channel cast in the door perimeter
- 5-position, barrier-type terminal block with quick-disconnect terminals on one side of each position and screw clamp terminals on the other side of each position
- 3-prong, PAR-46 lamp secured by a wire ring and a spring load clip
- Acrylic lenses colored to ITE specifications
- Masking kit

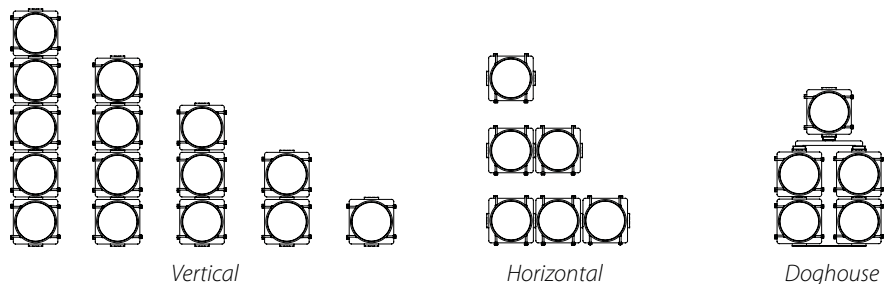
General Specifications

Dimensions:	13.3" H x 13.3" W x 18.0" D (1 section)
Material:	Housing: Cast aluminum, type 360, reduced corrosion, increased powder coat adhesion Door Hardware: Stainless steel
Finish(es):	Powder coated
Color(s):	Federal yellow, signal green, black, or custom colors
Access:	Front door (1), rear door (1)
Lamp:	PAR-46, 115 VAC, 150 W
Environmental:	Operating temperature: -37° C to +74° C Humidity: 0 to 95% (non-condensing)
Shipping Weight:	23 lbs (1-section)

Options

- Visors
 - Backplates
 - Mounting preset tilt angles
 - 0° - horizontal mount
 - 4° - standard mount, MAT mount
 - 8° - MAS mount
 - Various framework and fittings, orientation, and configurations
- Light Source: LED or incandescent

Typical Configurations



To learn more about McCain's Integrated Traffic Solutions, please contact info@mccain-inc.com or call (760) 727-8100



2365 OAK RIDGE WAY // VISTA, CALIFORNIA 92081 // USA // WWW.MCCAIN-INC.COM

© 2015 McCain Inc. Updated 04/08/2015. McCain reserves the right to change product specifications without notice. For the most up-to-date information, please contact McCain.